

USER MANUAL

FLEXIBLE CONVEYOR

XU BERTRAM



INSTRUCTION

Motorized flexible conveyor

1. INTRODUCTION

- Motorized flexible conveyor is used to solve problems on transport in such complicated environment as warehousing, packing line and loading/unloading etc., and can handle all sizes of boxed packages with flat bottom.
- It has an advantage over fixed conveyors in flexibility and movability. It makes skillful use of movement, stretch and compaction, so that floor space required can be reduced remarkably.
- This conveyor is a completely steel structure, with flexibility. And it can be laid out at your request.
- Multiple motorized flexible conveyors can be connected together and can be extendable optionally to any length required.
- In the process of transport, it can meet quick and safe requirements of handling between two interfaces so that working efficiency is improved and labor strength is reduced.

2. COMPOSITION



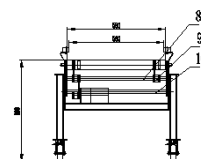
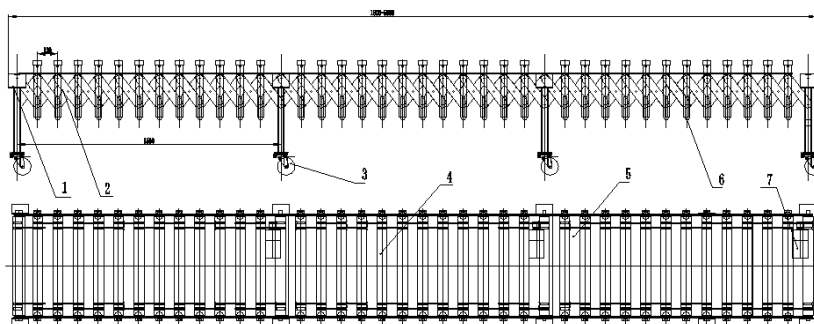
- ▲ **Conveying surface:** Conveying surface is composed of Polyvee-belt driven Dia.




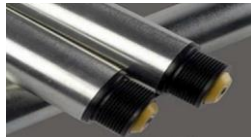



50mm rollers. Width of Conveying Surface : 500-800mm.




▲ **Load Capacity:** When completely expanding, load capacity per unit (between support legs) is not more than 60 kg (no shock).

▲ **Performance:** Polyvee-belt is driven by motor. Linear speed of roller conveying surface is 25 m/min(Range of Speed Regulation: 10 - 35m/min, electric control cabinet). In order to be easy in operation, start switch and E-Stop switches are mounted.



Component			
No.	Name	Description	Picture
1	Support leg	Welded profiles(square)	
2	Side plate	/	
3	Castor wheel	/	
4	Roller	Steel roller with polyvee wheel	
5	Polyvee belt	/	



6	Guide wheel	/	
7	Motor	AC230V,90W,25m/min(variable speed)	
	Handle	easy to push/ pull the conveyor	

3. INSTALLATION AND TEST

3.1 CHECK: At first, check if the packing is completed. If there is any damage, please feedback for us in time.

3.2 MOVEMENT: Take off the brakes of castors, and push or pull the conveyor with the handle. When moved to the designated position, step on the brakes.

3.3 CONNECTION: Since it is an end product, not necessary for reprocessing. Please connect the motor and control box according to the circuit diagram.

3.4 TEST: Before start, please check if the voltage is 230V, 50HZ, and the deviation is no more than 5%. Then check if the connection is correct.

▲ First-time running: If everything is all right, turn the button to start on the control box, and turn the button to stop in one minute to check if there is any exception or damage. (Because it is the first test, you should turn it off in one minute to protect the conveyor from exception.)

▲ Second-time running: If there is no exception, we can take the second test. Turn the button to start on the control box, and observe the running status, then turn the button to stop.



▲ Third-time running: If there is no exception, we can take the third test. Turn the button to start on the control box, and observe the running status. It should be no less than 30 minutes to observe the running status. If everything is all right, now we can start to use the conveyor.

▲ One-third loading test: If there is no exception, we can take the one-third loading test. Firstly, no more than one-third of the cargos quantity are allowed for the loading test. While running, we should observe the wearing parts such as motor, roller, polyvee-belt, etc.

▲ Maximum loading test: If there is no exception, we can take the maximum loading test. Maximum quantity is required for the loading test. While running, we should observe of all the parts. If there is no wear or damage, now we can start to use the conveyor safely.

Warning: no exception is allowed. If there is any problem, please contact the professional engineering for maintenance.

4. MAINTENANCE

4.1 Wearing part: motor, roller, polyvee-belt.

▲ Motor: Only professional engineering to disassemble, please contact us to repair or change.

▲ Roller: If it is not flexible and the noise is loud, please try to change the bearings. If it is deformed or damaged, please change the roller directly.

▲ Polyvee-belt: recommend to change the polyvee-belt when broken.

4.2 Lubricating: Please lubricate the mechanical moving parts regularly(one time per month would be better) and do not spill the lubricating on the polyvee belt to



prevent from skidding and aging problem. Especially for gear motor, it is necessary to clean and lubricate after 300 hours for the initial running and 2500 hours for the regular running.

5. CAUTION

- ◆ Please do not load anything overweighted or oversized.
- ◆ Please operate according to the instruction.